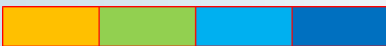




HYDRAULIC CHANGE-OVER VENT VALVE

- No more worrying about erratic pressure fluctuations damaging your machinery.
- This valve protects critical components from potential harm, ensuring smooth and efficient pressure regulation.
- It enhances system reliability and optimizes the overall performance of your lubrication system.

Used in single-line centralized lubrication systems driven by a hydraulic source. When hydraulic grease is supplied to the hydraulic relief valve at a specified pressure, the valve closes the internal cone valve and the return grease line, allowing the main lubrication line to build pressure. Once the hydraulic supply is cut off, the internal cone valve and return line open, allowing the main line to depressurize.



TECHNICAL SPECIFICATIONS

- **Maximum Working Pressure (Hydraulic Source):** 30 bar
- **Maximum Working Pressure (Grease Outlet):** 300 bar
- **Applicable Grease:** Up to NLGI 2
- **Grease Inlet Thread:** 3/4" NPTF
- **Safe Valve Interface Thread:** 1/8" NPTF
- **Return Grease Thread:** 1/4" NPTF
- **Hydraulic Grease Interface Thread:** 1/4" NPTF

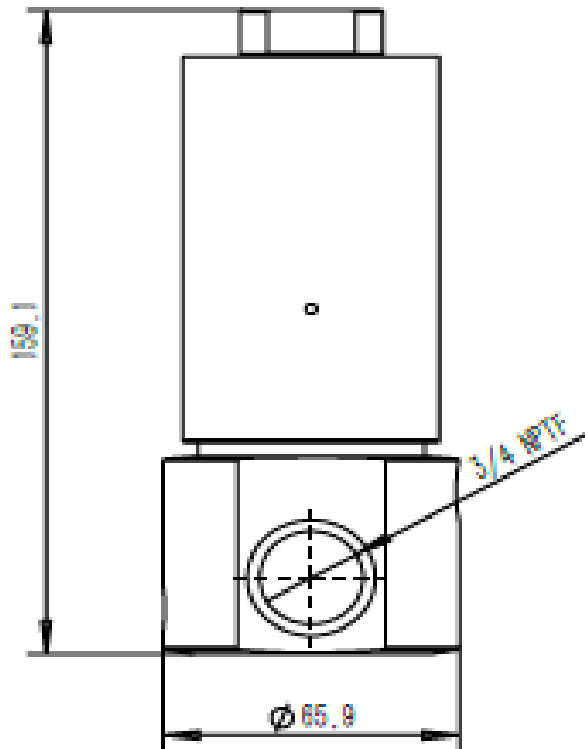
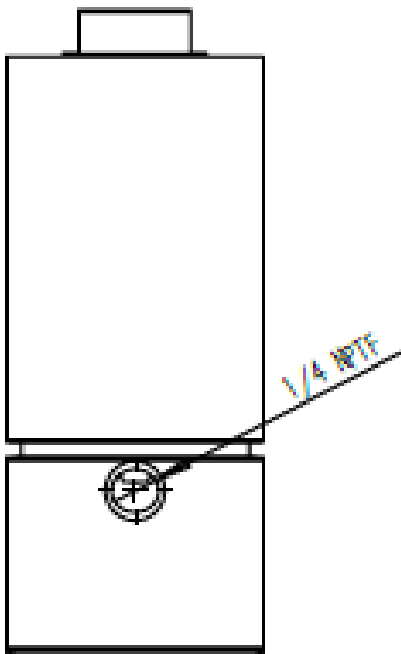
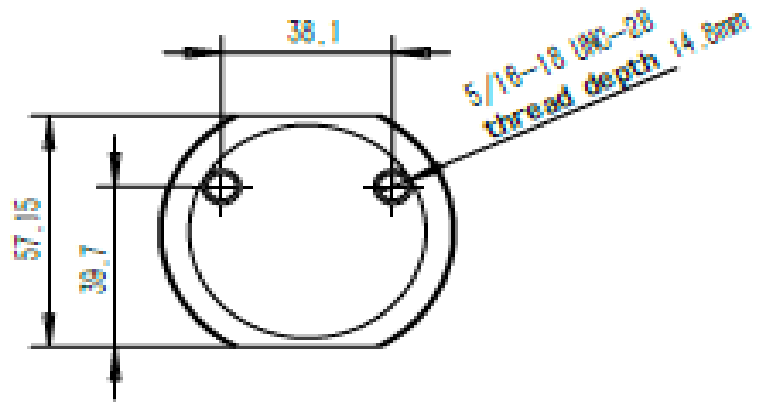


PART NUMBER : PG-405-105242-00
(SUBSTITUTES FOR LINCOLN 84980)



Automatic Lubrication Systems

WWW.SILVERIENG.COM | SALES@SILVERIENG.COM | 1300 766 413 | WHATSAPP +61 458 047 075



Automatic Lubrication Systems

