



# HOSE & FITTINGS CENTRALISED LUBRICATION SYSTEMS



[WWW.SILVERIENG.COM](http://WWW.SILVERIENG.COM) | [SALES@SILVERIENG.COM](mailto:SALES@SILVERIENG.COM) | 1300 716 413 | WHATSAPP +61 458 047 075



## LUBRICATION HOSE & FITTINGS



**LHF-100-001**

HIGH PRESSURE HOSE - 840 BAR Ø4 |  
GREASE FILLED



**LHF-100-002**

HIGH PRESSURE HOSE - 840 BAR Ø4 |  
UNFILLED



**LHF-100-003**

PLASTIC TUBE PA 12 HL SEMI-RIGID  
DIN 73378 D6 | S 1,5 | BLACK | UN-  
FILLED



**LHF -100-004**

PLASTIC TUBE PA 12 HL SEMI-RIGID  
DIN 73378 D6 | S 1,5 | BLACK |  
FILLED



**LHF -100-006**

PLASTIC TUBE PA 12 PHL FLEXIBLE  
DIN 73378 D4 | S 0,85 | BLACK | UN-  
FILLED



**LHF -100-040**

SPIRAL WRAP D6 | L 10 | S 1



**LHF -100-041**

SPIRAL WRAP D11,5 | L 10 | S 1,5



**LHF -100-050**

SCREW SLEEVE L28 | SW 12 | HOSE Ø  
4 (CHROME)



**LHF -100-050-SW**

SCREW SLEEVE BLACK L28 | SW 12 |  
HOSE Ø 4 (BLACK)



**WWW.SILVERIENG.COM | SALES@SILVERIENG.COM | 1300 716 413 | WHATSAPP +61 458 047 075**



## LUBRICATION HOSE & FITTINGS



**LHF -100-051**

HOSE STUD STRAIGHT D6 | L 61 | L1  
30 | HOSE



**LHF -100-051-1**

HOSE STUD STRAIGHT D1/8 NPT | L 56  
| HOSE  $\varnothing$  1/8"



**LHF -100-051-NUT-SW**

HOSE STUD STRAIGHT GROOVED,  
BLACK D 6 | L 61 | L1 30 | HOSE  $\varnothing$  4



**LHF -100-052**

HOSE STUD 90° D6 | H 13 | L 21 |  
HOSE  $\varnothing$  4



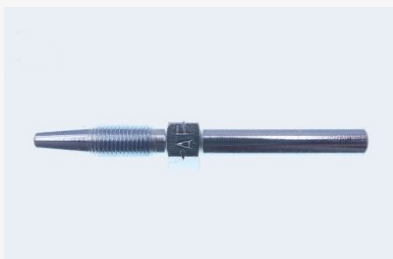
**LHF -100-053-NUT**

HOSE STUD 90° GROOVED D6 | H 28  
| L 37 | HOSE  $\varnothing$  4



**LHF -100-054-NUT-SW**

HOSE STUD STRAIGHT GROOVED,  
BLACK D 6 | L 52,5 | L1 21,5 | HOSE  $\varnothing$   
4



**LHF -100-055**

HOSE STUD STRAIGHT D6 | L 55 | L1  
24 | HOSE  $\varnothing$  4



**LHF -100-057**

HOSE STUD 45° GROOVED D6 | H 24  
| L 15 | HOSE  $\varnothing$  4



**LHF -100-057-NUT**

HOSE STUD 45° GROOVED D6 | H 24  
| L 15 | HOSE  $\varnothing$  4



**WWW.SILVERIENG.COM | SALES@SILVERIENG.COM | 1300 716 413 | WHATSAPP +61 458 047 075**



## LUBRICATION HOSE & FITTINGS



**LHF -100-061**

HOSE STUD STRAIGHT L 56 | L1 25 |  
HOSE Ø 4



**LHF -100-064**

HOSE STUD STRAIGHT, D6 | L 65,5 |  
L1 22 | HOSE Ø 6



**LHF -100-064-VA**

HOSE STUD STRAIGHT, 316 D6 | L  
65,5 | L1 22 | HOSE Ø 6 SS



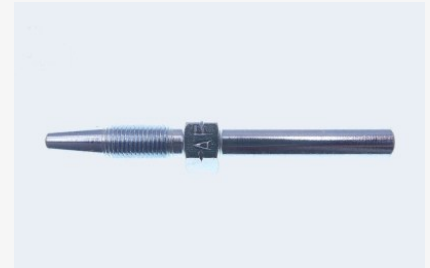
**LHF -100-073**

HOSE STUD 90°, D8 | H 23 | L 36 |  
HOSE Ø 6



**LHF -100-073-VA**

HOSE STUD 90°, 316 D8 | H 23 | L 36  
| HOSE Ø 6 SS



**LHF -100-074-VA**

HOSE STUD STRAIGHT, 316 D8 | L  
65,5 | L1 22 | HOSE Ø 6 SS



**LHF -100-074-VA**

HOSE STUD STRAIGHT, D8 | L 65,5 |  
L1 22 | HOSE Ø 6 (STAINLESS STEEL)



**LHF -100-120**

ADAPTER – EXTENSION-PIECE GM6 X  
1 TAP | G1 M 8 X 1 L L 19 | SW 11



**LHF -100-130**

ADAPTER – EXTENSION-PIECE G M 8 X  
1 TAP | G1 M 8 X 1 L L 18 | SW 11



**WWW.SILVERIENG.COM | SALES@SILVERIENG.COM | 1300 716 413 | WHATSAPP +61 458 047 075**

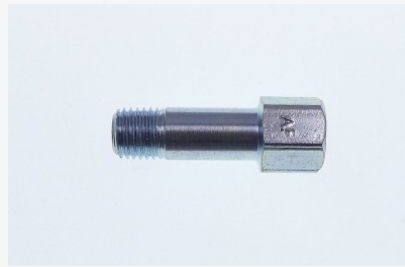


## LUBRICATION HOSE & FITTINGS



**LHF -100-141**

ADAPTER – EXTENSION-PIECE G M 10 X 1 TAP | G1 M 10 X 1 L L23 | SW 13



**LHF -100-170**

ADAPTER – EXTENSION-PIECE G M 8 X 1 TAP | G1 RP 1/8 BSP L L 23 | SW 13



**LHF -100-210-1**

GREASING BLOCK 1 G M 10 X 1 | D 2 X 6,5 | 20X20



**LHF -100-210-2**

GREASING BLOCK 2G M 10 X 1 | D 2 X 6,5 | 20X20



**LHF -100-243-SW**

CLOSURE PLUG STEEL BLACK G M 10 X 1 | L 4,5



**LHF -100-722**

ADAPTER 90° G M 8 X 1 TAP | G1 M 8 X 1 | SW 23 | SW 12



**LHF -100-723**

ADAPTER 90° G M 10 X 1 TAP | G1 M 8 X 1 | SW 23 | SW 12



**LHF -100-744**

ADAPTER 90° G R 1/8 BSP TAP | G1 RP 1/8 BSP | L 23 | SW 13



**LHF -100-822**

ADAPTER 45° G M 8 X 1 TAP | G1 M 8 X 1 | L 23 | SW 13





## LUBRICATION HOSE & FITTINGS



**LHF -100-823**

ADAPTER 45° G M 10 X 1 TAP | G1 M  
8X1 | L 23 | SW 13



**LHF -100-844**

ADAPTER 45° G R 1/8 BSP TAP | G1  
RP 1/8 BSP | L 23 | SW 13



**LHF -104-054**

QUICK CONNECTOR STRAIGHT D4 | G  
R 1/8 BSP TAP | SW 10



**LHF -104-114**

ELBOW QUICK CONNECTOR PIVOT-  
ABLE D4 | G R 1/8 BSP TAP | SW 13



**LHF -104-115-UNF**

ELBOW QUICK CONNECTOR PIVOT-  
ABLE D4 | G 1/4 - 28 UNF | SW 13



**LHF -104-154**

ELBOW QUICK CONNECTOR D 4 | G R  
1/8 BSP TAP | SW 10



**LHF -104-155-UNF**

ELBOW QUICK CONNECTOR D 4 | G  
1/4 - 28 UNF | SW 10



**LHF -106-000**

STRAIGHT TUBE CONNECTOR LL | D 6  
| D1 6



**LHF -106-001**

STRAIGHT MALE SCREW-IN FITTING  
LL | D 6 | G M 6 X 1 TAP | SW 11 |  
SW1 12





## LUBRICATION HOSE & FITTINGS



**LHF -106-002**

STRAIGHT MALE SCREW-IN FITTING  
LL | D 6 | G M 8 X 1 TAP | SW 11 |  
SW1 12



**LHF -106-003**

STRAIGHT MALE SCREW-IN FITTING  
LL | D 6 | G M 10 X 1 TAP | SW 11 |  
SW1 12



**LHF -106-003-RVL**

NON-RETURN VALVE 24° WITH  
CLAMPING RING COMPLETELL | D 6  
| G M 10 X 1 | BLACK



**LHF -106-004**

STRAIGHT MALE SCREW-IN FITTING  
LL | D 6 | G R 1/8 BSP TAP | SW 11 |  
SW1 12



**LHF -106-004-NPT**

STRAIGHT MALE SCREW-IN FITTING  
LL | D 6 | G 1/8 NPT | SW 11 | SW1  
12



**LHF -106-005**

STRAIGHT MALE SCREW-IN FITTING  
LL | D 6 | G R 1/4 BSP TAP | SW 11 |  
SW1 12



**LHF -106-051**

QUICK CONNECTOR STRAIGHT D6 |  
GM 6 X 1 TAP | SW 12



**LHF -106-052**

QUICK CONNECTOR STRAIGHT D6 |  
GM 8 X 1 TAP | SW 12



**LHF -106-053**

QUICK CONNECTOR STRAIGHT D6 |  
GM 10 X 1 TAP | SW 12





## LUBRICATION HOSE & FITTINGS



**LHF -106-054**

QUICK CONNECTOR STRAIGHT D6 |  
GR 1/8 BSP TAP | SW 12



**LHF -106-101**

ELBOW MALE SCREW-IN FITTING LL |  
D 6 | G 6 X 1 TAP | SW 11 | SW1 12



**LHF -106-102**

ELBOW MALE SCREW-IN FITTING LL |  
D 6 | G 8 X 1 TAP | SW 11 | SW1 12



**LHF -106-102-8X1,25**

ELBOW MALE SCREW-IN FITTING LL |  
D 6 | G 8 X 1,25 TAP | SW 11 | SW1  
12



**LHF -106-103**

ELBOW MALE SCREW-IN FITTING LL |  
D 6 | G 10 X 1 TAP | SW 11 | SW1 12



**LHF -106-104**

ELBOW MALE SCREW-IN FITTING LL |  
D 6 | G R 1/8 BSP TAP | SW 11 | SW1  
12



**LHF -106-104-NPT**

ELBOW MALE SCREW-IN FITTING LL |  
D 6 | G 1/8 NPT | SW 11 | SW1 12



**LHF -106-105-L**

ELBOW MALE SCREW-IN FITTING L |  
D 6 | G R 1/4 BSP TAP | SW 12 | SW1  
14



**LHF -106-110**

STRAIGHT QUICK CONNECTOR D6 | L  
29,5





## LUBRICATION HOSE & FITTINGS



**LHF -106-111**

ELBOW QUICK CONNECTOR PIVOT-  
ABLE D6 | G M 6 X 1 TAP | SW 13



**LHF -106-112**

ELBOW QUICK CONNECTOR PIVOT-  
ABLE D6 | G M 8 X 1 TAP | SW 13



**LHF -106-113**

ELBOW QUICK CONNECTOR PIVOT-  
ABLE D6 | G M 10 X 1 TAP | SW 13



**LHF -106-114**

ELBOW QUICK CONNECTOR PIVOT-  
ABLE D6 | G R 1/8 BSP TAP | SW 13



**LHF -106-114-NPT**

ELBOW QUICK CONNECTOR PIVOT-  
ABLE D 6 | G 1/8 NPT | SW 13



**LHF -106-115-UNF**

ELBOW QUICK CONNECTOR PIVOT-  
ABLE D6 | G 1/4 - 28 UNF | SW 13



**LHF -106-151**

ELBOW QUICK CONNECTOR D6 | G M  
6 X 1 TAP | SW 10



**LHF -106-152**

ELBOW QUICK CONNECTOR D 6 | G  
M 8 X 1 TAP | SW 10



**LHF -106-153**

ELBOW QUICK CONNECTOR D6 | G M  
10 X 1 TAP | SW 10



**WWW.SILVERIENG.COM | SALES@SILVERIENG.COM | 1300 716 413 | WHATSAPP +61 458 047 075**



## LUBRICATION HOSE & FITTINGS



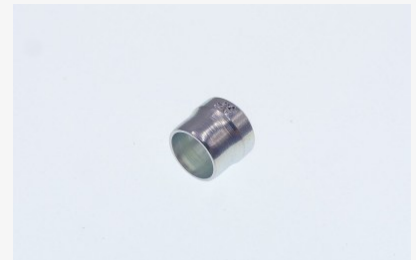
**LHF -106-154**

ELBOW QUICK CONNECTOR D 6 | G R  
1/8 BSP TAP | SW 10



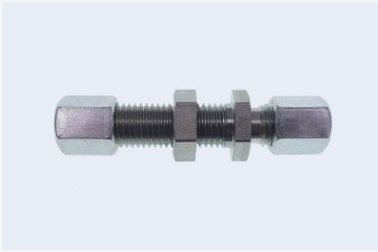
**LHF -106-200**

COUPLING NUT 24°LL | D6 | SW 12



**LHF -106-210**

CUTTING RING LL | D6



**LHF -106-221-L**

BULKHEAD STRAIGHT L | D6 | L 48



**LHF -106-241-L**

BULKHEAD STRAIGHT - FEMALE  
THREAD L | D 6 | G M 6 X 1 IN. | L28



**LHF -106-300**

EQUAL TEE CONNECTOR LL | D 6



**LHF -2010-101**

QUICK CONNECTOR STRAIGHT D 1/4"  
| G 1/4 - 28 UNF | SW 12



**LHF -2010-102**

QUICK CONNECTOR STRAIGHT D 1/4"  
| G 1/8 NPT | SW 12



**LHF -2011-102**

ELBOW QUICK CONNECTOR D 1/4" |  
G 1/8 NPT | SW 10



**WWW.SILVERIENG.COM | SALES@SILVERIENG.COM | 1300 716 413 | WHATSAPP +61 458 047 075**



## LUBRICATION HOSE & FITTINGS



**LHF -2012-102**

ELBOW QUICK CONNECTOR PIVOT-  
ABLE D1/4" | G 1/8 NPT | SW 13



**LHF -250-001**

GREASE NIPPLE G M 6 X 1 TAP H 1  
DIN 71412 A



**LHF -250-003**

GREASE NIPPLE G M 10 X 1 TAP H 1  
DIN 71412 A



**LHF -250-003-VA**

GREASE NIPPLE STAINLESS STEEL  
316G M 10 X 1 TAP H 1 DIN 71412 A



**LHF -250-004**

GREASE NIPPLE GR 1/8 BSPT H 1 DIN  
71412 A



**LHF -250-004-NPT**

GREASE NIPPLE G1/8" - 27 NPT H 1  
DIN 71412 A



**LHF -250-004-VA**

GREASE NIPPLE STAINLESS STEEL  
316G R 1/8 BSPT H1 DIN 71412 A



**LHF -251-003**

GREASE NIPPLE 45°G M 10 X 1 TAP H  
2 DIN 71412 B



**LHF -251-004**

GREASE NIPPLE 45°G R 1/8 BSPT H 2  
DIN 71412 B



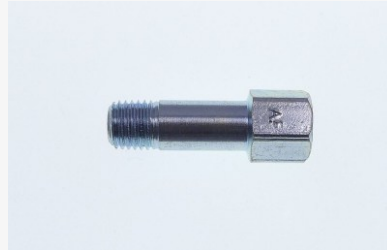


## LUBRICATION HOSE & FITTINGS



**LHF -251-004-NPT**

GREASE NIPPLE 45°G 1/8-27 NPT H 2  
DIN 71412 B



**LHF -2510-106**

ADAPTER – EXTENSION-PIECE G M 10  
X 1 TAP | G1 RP 1/8 BSP L L 18 | SW  
13



**LHF -252-003**

GREASE NIPPLE 90°G M 10 X 1 TAP H  
3 DIN 71412 C



**LHF -252-004**

GREASE NIPPLE 90°G R1/8 BSPT H 3  
DIN 71412 C



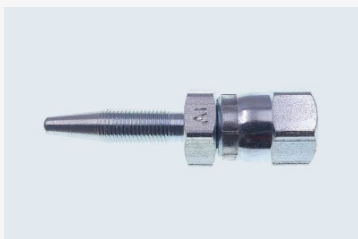
**LHF -252-004-NPT**

GREASE NIPPLE 90°G 1/8-27 NPT H 3  
DIN 71412 C



**LHF -3510-110**

HOSE STUD STRAIGHT D 1/4 | L 61 |  
L1 30 | HOSE Ø 4



**LHF -3510-114**

HOSE STUD STRAIGHT JICD JIC 37°  
7/16 | L 27,5 | SW 14 | HOSE Ø 4



**LHF -3511-111**

HOSE STUD 90° GROOVED D 1/4" | H  
28 | L 37 | HOSE Ø 4



**LHF -3511-114**

HOSE STUD 90° JICD JIC 37° 7/16 | H  
20,7 | L 25,7 | HOSE Ø 4





## LUBRICATION HOSE & FITTINGS



**LHF -3511-116**

HOSE STUD 90° GROOVED, BLACK D6  
| H 17 | L 28 | HOSE Ø 4



**LHF -3511-210**

HOSE STUD 90°, 316D 6 | H 22 | L 45  
| HOSE Ø 6



**LHF -5029-103**

GREASING BLOCK 3G M 10 X 1 | D 2 X  
6,5 | 20X20



**LHF -5029-111**

GREASING BLOCK 1 G 1/8 BSP | D 2 X  
6,5 | 20X20 (1 PORT)



**LHF -5029-112**

GREASING BLOCK 3 G 1/8 BSP | D 2 X  
6,5 | 20X20 (3 PORT)



**LHF -5029-113**

GREASING BLOCK 3 G1/8 BSP | D 2 X  
6,5 | 20X20 (3 PORT)



**LHF -5029-114**

GREASING BLOCK 4G 1/8 BSP | D 2 X  
6,5 | 20X20 (4 PORT)



**LHF -5029-115**

GREASING BLOCK 5 G1/8 BSP | D 2 X  
6,5 | 20X20 (5 PORT)



**LHF -5029-116**

GREASING BLOCK 6 G1/8 BSP | D 2 X  
6,5 | 20X20 (6 PORT)





## LUBRICATION HOSE & FITTINGS



**LHF -5029-119**

GREASING BLOCK 9 G1/8 BSP | D 2 X  
6,5 | 20X20 (9 PORT)



**LHF -5029-124**

GREASING BLOCK 4 G1/8 NPT | D 2 X  
6,5 | 20X20



**LHF -5029-126**

GREASING BLOCK 6 G1/8 NPT | D 2 X  
6,5 | 20X20



**LHF -5029-129**

GREASING BLOCK 9 G1/8 NPT | D 2 X  
6,5 | 20X20



**LHF -5029-201**

GREASING BLOCK 1 - 316 G M 10 X 1  
| D 2 X 6,5 | 25X25 (STAINLESS STEEL)



**LHF -5029-211**

GREASING BLOCK 1 - 316 G M 10 X 1  
| D 1 X 6,5 | 25X25 (STAINLESS STEEL)



**LHF -5029-212**

GREASING BLOCK 2 - 316 G M 10 X 1  
| D 2 X 6,5 | 25X25 (STAINLESS STEEL)



**LHF -5029-213**

GREASING BLOCK 3 - 316 G M 10 X 1  
| D 2 X 6,5 | 25X25 (STAINLESS STEEL)



**LHF -5029-214**

GREASING BLOCK 4 - 316 G M 10 X 1  
| D 2 X 6,5 | 25X25 (STAINLESS STEEL)



**WWW.SILVERIENG.COM | SALES@SILVERIENG.COM | 1300 716 413 | WHATSAPP +61 458 047 075**



## LUBRICATION HOSE & FITTINGS



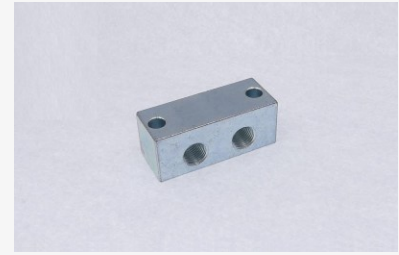
**LHF -5029-215**

GREASING BLOCK 5 - 316 G M 10 X 1  
| D 2 X 6,5 | 25X25(STAINLESS STEEL)



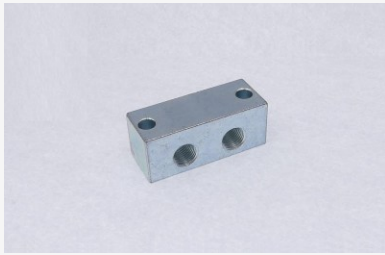
**LHF -5029-216**

GREASING BLOCK 6 - 316 G M 10 X 1  
| D 2 X 6,5 | 25X25 (STAINLESS STEEL)



**LHF -5029-218**

GREASING BLOCK 8 - 316 G M 10 X 1  
| D 2 X 6,5 | 25X25 (STAINLESS STEEL)



**LHF -5029-301**

GREASING BLOCK 1 - 316 G 1/8 BSP |  
D 2 X 6,5 | 25X25 (STAINLESS STEEL)



**LHF -5029-311**

GREASING BLOCK 1 - 316 G 1/8 BSP |  
D 1 X 6,5 | 25X25 (STAINLESS STEEL)



**LHF -5029-312**

GREASING BLOCK 2 - 316 G 1/8 BSP |  
D 2 X 6,5 | 25X25 (STAINLESS STEEL)



**LHF -5029-313**

GREASING BLOCK 3 - 316 G 1/8 BSP |  
D 2 X 6,5 | 25X25 (STAINLESS STEEL)



**LHF -5029-314**

GREASING BLOCK 4 - 316 G 1/8 BSP |  
D 2 X 6,5 | 25X25 (STAINLESS STEEL)



**LHF -5029-315**

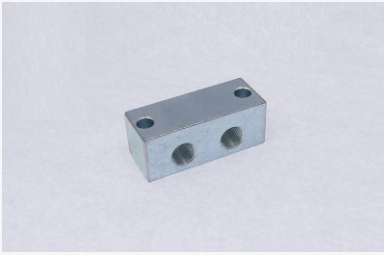
GREASING BLOCK 5 - 316 G 1/8 BSP |  
D 2 X 6,5 | 25X25 (STAINLESS STEEL)



**WWW.SILVERIENG.COM | SALES@SILVERIENG.COM | 1300 716 413 | WHATSAPP +61 458 047 075**



## LUBRICATION HOSE & FITTINGS



**LHF -5029-316**

GREASING BLOCK 6 - 316 G 1/8 BSP |  
D 2 X 6,5 | 25X25 (STAINLESS STEEL)



**LHF -5029-318**

GREASING BLOCK 8 - 316 G 1/8 BSP |  
D 2 X 6,5 | 25X25 (STAINLESS STEEL)



**PG-537-101418-05**

K5 PUMP ELEMENT TO SUIT PG203  
(SUITS SKF P203 PUMPS)



**PG-537-100271-06**

K6 ELEMENT TO SUIT PG203  
(SUITS SKF P203 PUMPS)



**PG-537-100078-00**

K7 ELEMMENT TO SUIT PG203  
(SUITS SKF P203 PUMPS)



**PG-080-1101003-00**

ADJUSTABLE ELEMMENT  
TO SUIT PG203 (SUITS SKF P203  
PUMPS)



**PG-102-102641-01**

RELIEF VALVE  
TO SUIT PG203 (SUITS SKF P203  
PUMPS)



**PG-306-102175-00**

RELIEF VALVE ADAPTER (SUITS SKF  
P203 PUMPS)



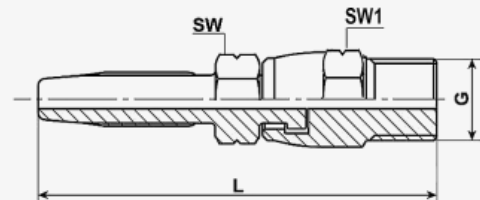
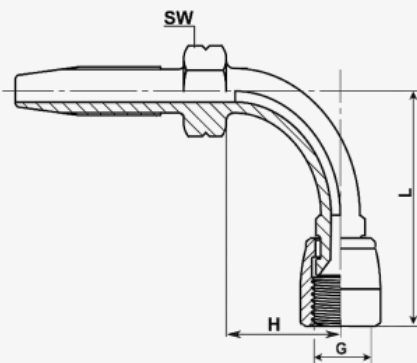
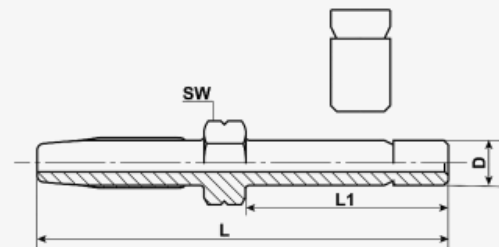
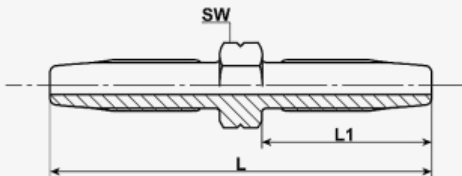
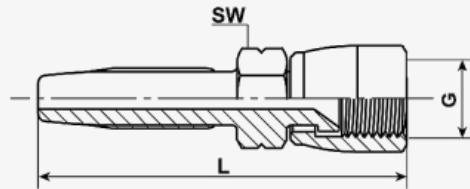
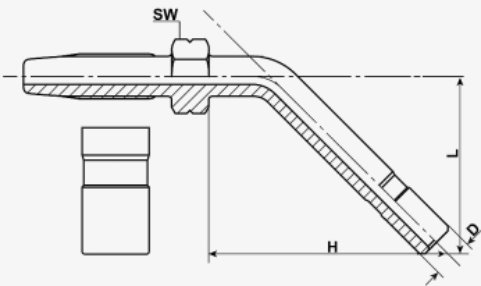
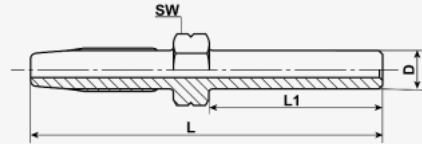
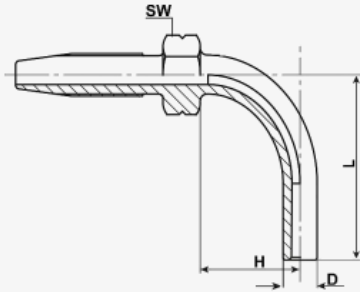
**PG-539-113625-00**

BRACKET  
FOR PG203 INSTALLATION (SUITS SKF  
P203 PUMPS)



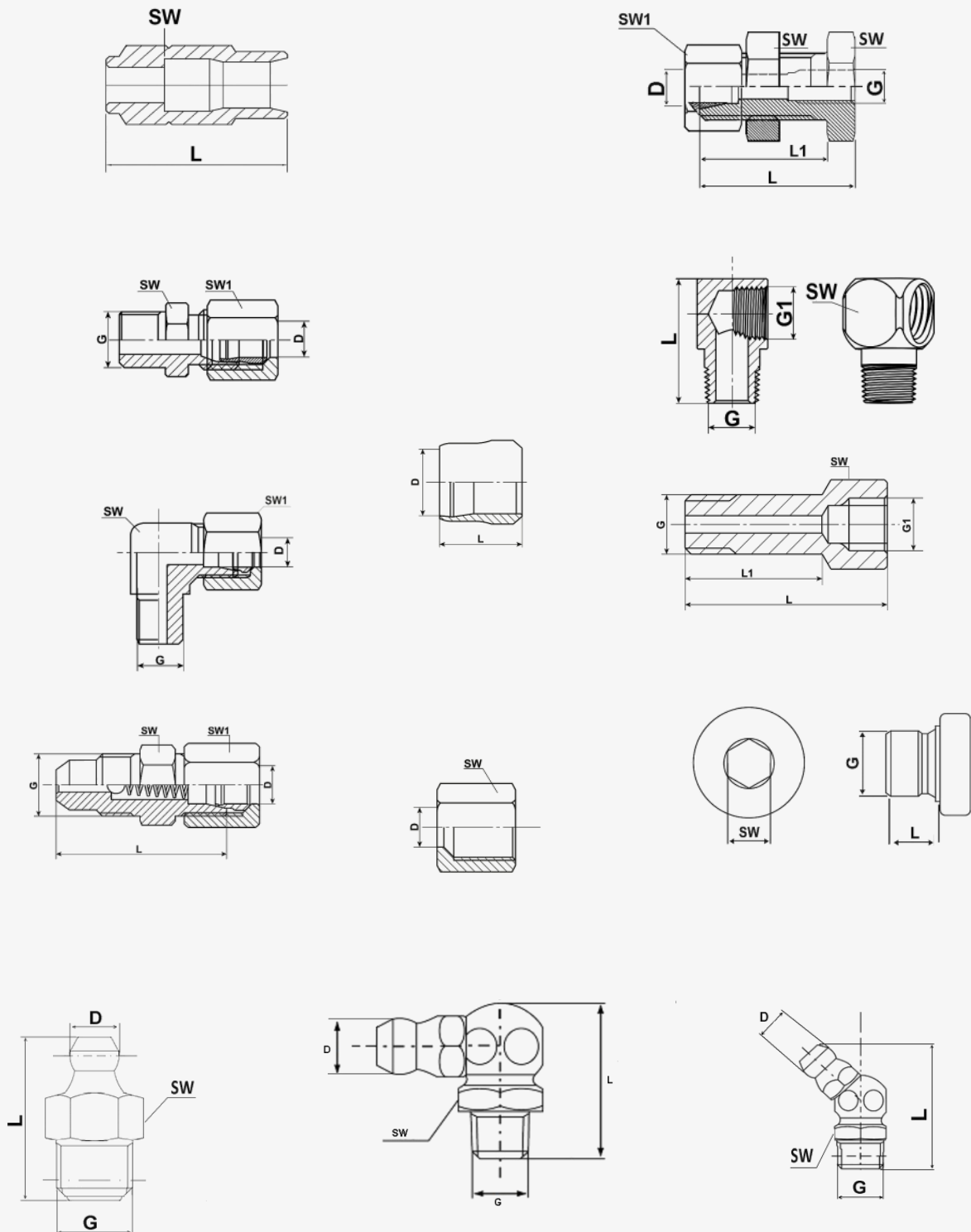
# LUBRICATION HOSE & FITTINGS

## *Dimensional Information*

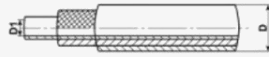


# LUBRICATION HOSE & FITTINGS

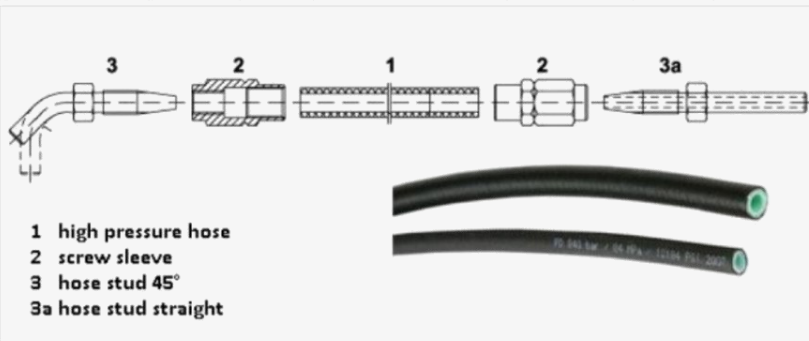
## *Dimensional Information*



### High-pressure hoses - 840 bar



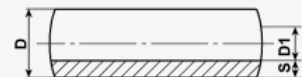
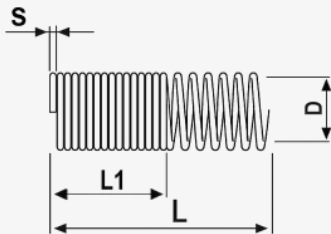
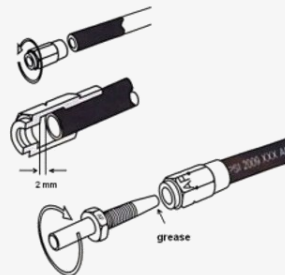
Item No.	D	D1	Grease	m / coil	Box	Palett
100-001	8,6	4,0	NLGI class 2	50 m	250	3000
100-002	8,6	4,0	empty	50 m	250	3000
100-011	11,3	6,3	NLGI class 2	100 m	200	2000
100-012	11,3	6,3	empty	100 m	200	2000



After cutting the hose to the required size, grease first the nozzle tip of the hose stud before assembling. This avoids damages of the inner core of the hose.

Then screw the screw sleeve with the left-hand thread on the end of the hose. Leave a 2 mm space, see drawing.

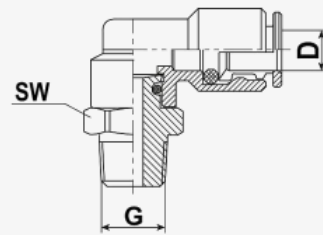
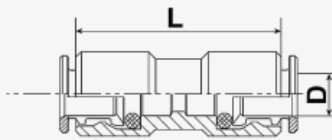
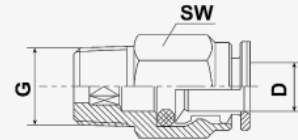
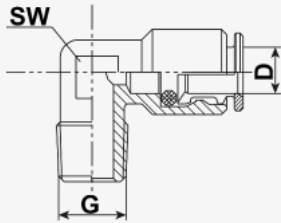
Final, screw the hose stud with right-hand thread. Automatically, the high pressure hose is pressed pressure-resistant with the screw sleeve.





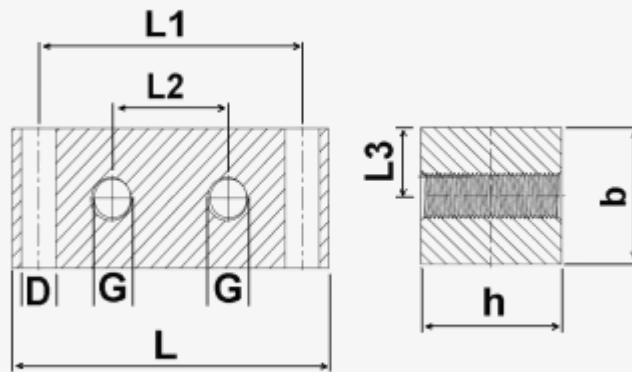
# LUBRICATION HOSE & FITTINGS

## *Dimensional Information*





# LUBRICATION HOSE & FITTINGS





Contact us for more information

1300 766 413

[sales@silverieng.com](mailto:sales@silverieng.com)

[www.silverieng.com](http://www.silverieng.com)

