

# PG-HCH Hydraulically Operated Grease Pump

Mobile Equipment or Grease Transfer Applications

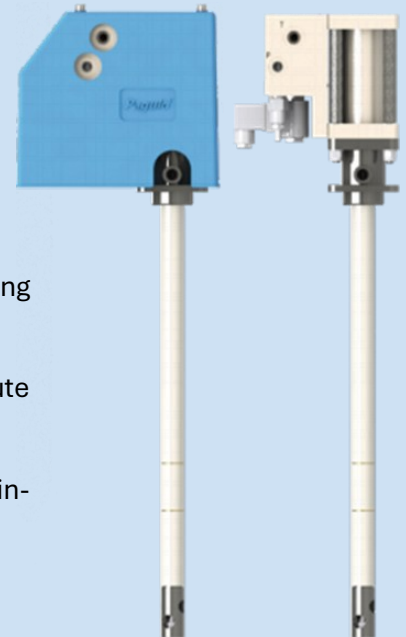
*"FLUID EQUIPMENT SPECIALISTS"*





# PG-HCH

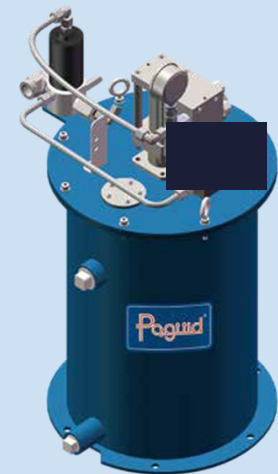
## HYDRAULICALLY OPERATED GREASE PUMP



- The HCH series of the hydraulic lubrication pump is a double-acting piston pump that is operated by hydraulic pressure.
- It uses a single-line parallel grease metering component to distribute grease at both the up and down strokes.
- Suitable for use in all types of automatic lubrication systems or, indeed, as a stand alone pump, HCH Grease
- Pump has exceptional performance and reliability.
- Easily substitutes for the competitor Hydraulic Pump (High Chief 03-000920).
- Rigorously tested, with vast field application experience.

### Features and Characteristics

- ◆ Designed to transfer grease at a rate of up to 132cm<sup>3</sup>/minute depending on the pump setting and system design.
- ◆ Adjustable outputs suitable for single line parallel injector systems (Centromatic Systems),
- ◆ Single line & progressive systems (Quicklub, Modular Lube) and two line systems (Dual Line and Duo Matic)
- ◆ Shovel foot pump tube for pumping non-self levelling lubricant.
- ◆ Pump construction manufactured with high quality materials, integrated valving and solid-state circuitry which allows for on/off control via a 24VDC supply
- ◆ The modular construction allows for easy, low cost maintenance.



Sample Design used in a Pump Station

18Kg , 27Kg, 41Kg, 54Kg, 180Kg

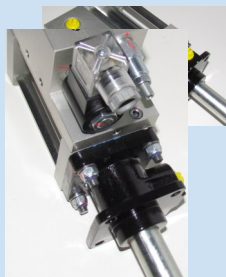
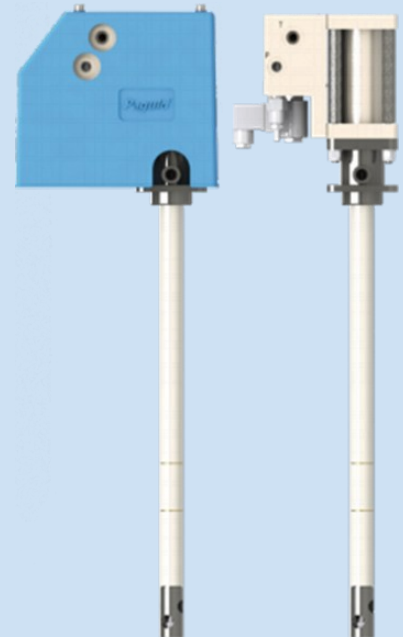
- HCH pump head repair kit available
- HCH pump tube repair kit available



SUPPLY INLET PRESSURE	20-220BAR	TANK RETURN PORT	9/16" JIC
HYDRAULIC INLET FLOW	0.25-3.0L/MIN	OPERATING TEMPERATURE	-10 °C TO +60 °C
OUTPUT PRESSURE	300BAR	PUMP OUTLETS	1/4" NPT
OPERATING VOLTAGE	24 VDC	MAXIMUM HYDRAULIC	98°C
HYDRAULIC INLET PORT	7/16" JIC	OUTPUT PER CYCLE	8.8CM <sup>3</sup>



# PG-HCH HYDRAULICALLY OPERATED GREASE PUMP



PG-561-109821-01



PG-324-112288-02



PG-509-112243-01



PG-509-112243-02

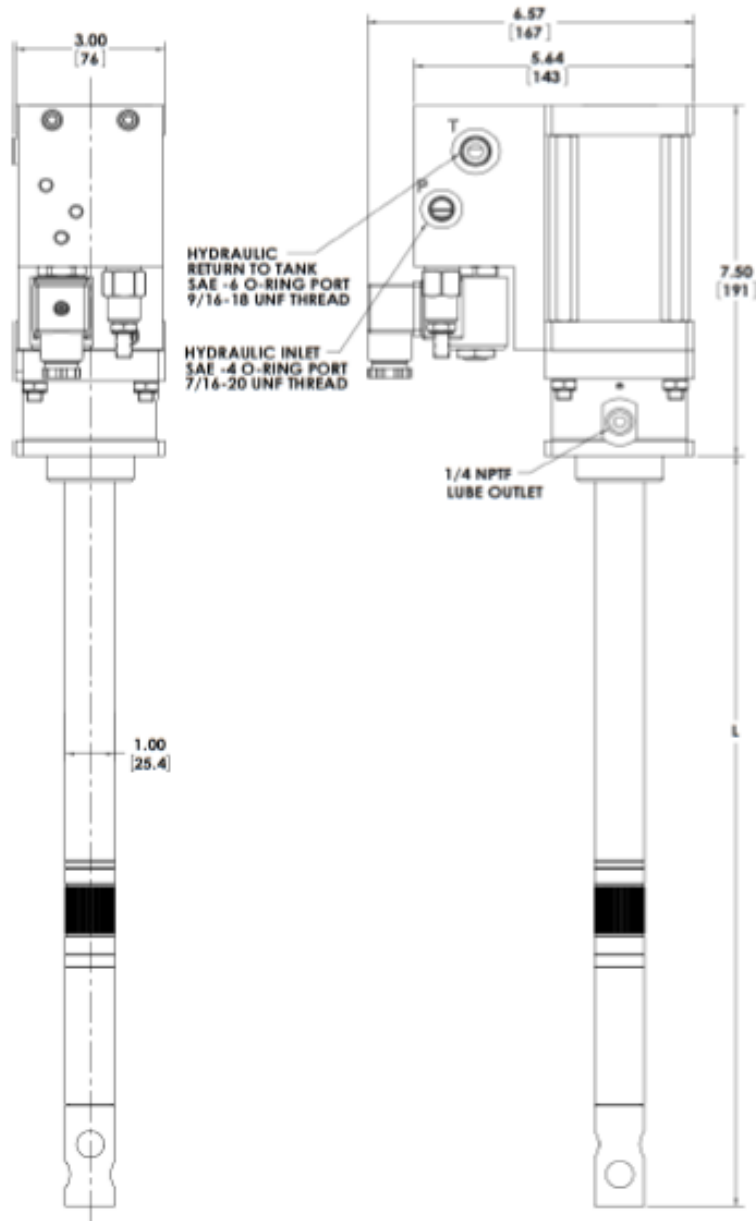
## ORDERING

PART NUMBER	DESCRIPTION
PG-561-109821-01	PG-HCH HYDRAULICALLY OPERATED GREASE PUMP WITH HEAD COVER
PG-324-112288-02	TIMER WITH PULSE OUTPUT (WITH CABLES)
PG-509-112243-01	HCH PUMP HEAD REPAIR KIT
PG-509-112243-02	HCH PUMP TUBE REPAIR KIT

**“FLUID EQUIPMENT SPECIALISTS”**



**Dimensional Information**



BASIC PUMP	DRUM SIZE	DIMENSION L
HCH-M	Mini Pump	350mm
HCH-20	20kg	479 mm
HCH-60	60kg	552 mm
HCH-180	180kg	862mm

