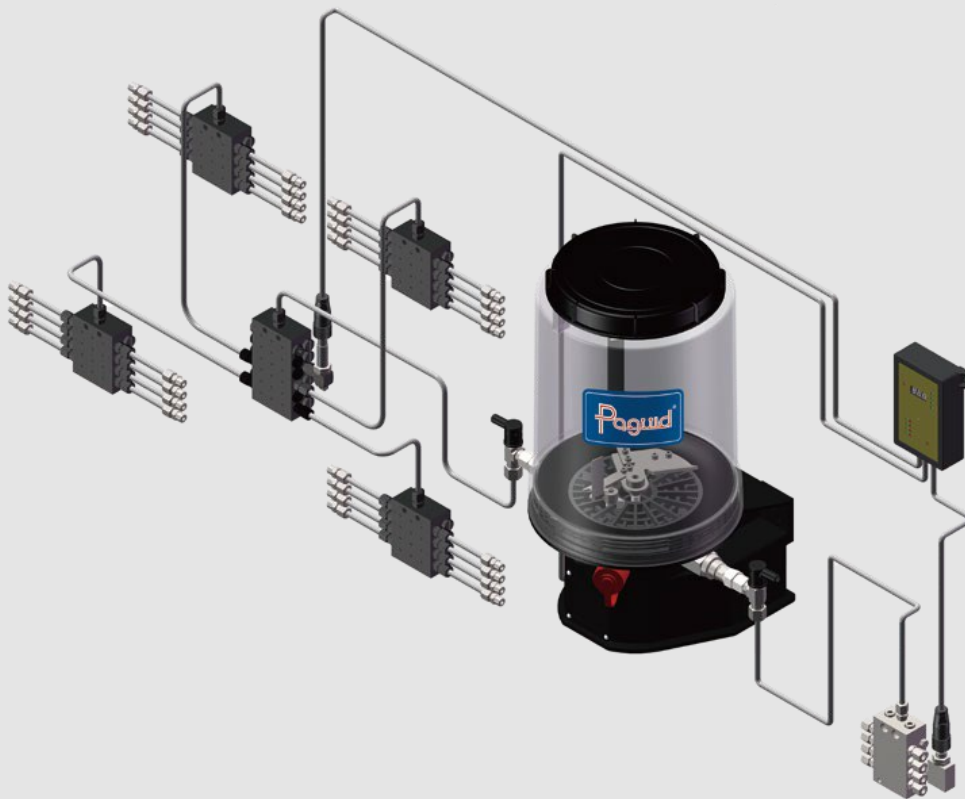




PG203 Series of Electric Lubrication Pump

CONSTRUCTION MACHINERY | BUS CHASSIS | ROAD TRANSPORT |
SMALL AND MEDIUM-SIZED MECHANICAL EQUIPMENT





The Progressive Lubrication System is composed of a supply unit, a progressive distribution unit, pipeline accessories, and a control unit. Under the pressure from the supply unit, the progressive distribution unit dispenses the quantitative lubricant to each lubrication point in a progressive order.

The Progressive Lubrication System monitors the operation status of the whole system through the control unit. The system adopts timing control mode or counting control mode; in timing mode, the lubrication time/intermittent time is adjustable; in counting mode, the lubrication frequency/intermittent time can be adjusted. It is mainly used by small and medium-sized equipment that requires centralized and continuous lubrication.





PG203

SERIES OF ELECTRIC LUBRICATION PUMP

The PG203 electric lubrication pump is an automatic centralized lubrication pump with excellent performance that can supports up to three pump elements. It is suitable for progressive centralized lubrication systems and is commonly used in construction machinery, bus chassis, and small and medium-sized mechanical equipment.

It boasts strong versatility, a compact structure, and excellent working performance. The integrated pump base makes it highly economical and widely used.

The system can be equipped with a low-level alarm, a blockage alarm, and a control unit, which greatly expands the industry application scope of the PG203 electric lubrication pump.



SYSTEM PRESSURE	35MPA						
RESERVOIR CAPACITY	2L、4L、8L						
OPERATING VOLTAGE	12VDC、24VDC、230VAC						
PUMP ELEMENT ML/MINUTE	K5	K6-2.5	K6	K7	K8	KR7	KR8
	2	2.5	2.8	4	5	0.7-3	1.3-5
NUMBER OF PUMP ELEMENTS	1-3 OUTLETS						
GREASE OUTLET THREAD	G1/4 INNER THREAD						
OPERATING TEMPERATURE	-40° C - +80° C						
PROTECTION CLASS	IP65						
APPLICABLE GREASE TYPE	UP TO NLGI 2#						

SUBSTITUTES LINCOLN SKF P203 PUMP

PART NUMBER	DESCRIPTION
PG-501-132045-06	PG203-2XLNFCO-1K7-24V-1A1-M
PG-501-132046-06	PG203-4XLNFCO-1K7-24V-1A1-M
PG-501-132047-06	PG203-8XLNFCO-1K7-24V-1A1-M





PG203

ELEMENTS, RELIEF VALVES, BRACKETS



PG-537-101418-05 K5 PUMP ELEMENT
TO SUIT PG203



PG-537-100271-06 K6 ELEMENT
TO SUIT PG203



PG-537-100078-00 K7 ELEMMENT
TO SUIT PG203



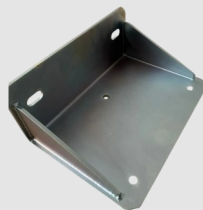
PG-080-1101003-00, ADJUSTABLE
ELEMMENT
TO SUIT PG203



PG-102-102641-01 RELIEF VALVE
TO SUIT PG203



PG-306-102175-00
RELIEF VALVE ADAPTER



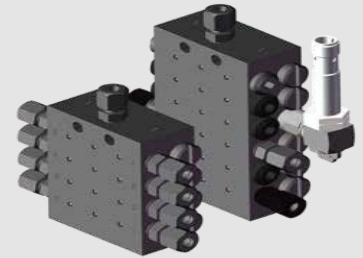
PG-539-113625-00 BRACKET
FOR PG203 INSTALLATION

PART NUMBER	DESCRIPTION
PG-531-109527 -01	SSVD DISPLACEMENT SCREWS 0.08ML (MOQ 10)
PG-531-109527 -04	SSVD DISPLACEMENT SCREWS 0.3ML (MOQ 10)
PG-531-109527 -06	SSVD DISPLACEMENT SCREWS 0.6ML (MOQ 10)
PG-531-109527 -07	SSVD DISPLACEMENT SCREWS 0.8ML (MOQ 10)
PG-531-109527 -10	SSVD DISPLACEMENT SCREWS 1.8ML (MOQ 10)



SUBSTITUTES LINCOLN SKF P203 PUMP





PG-SSV DISTRIBUTOR BLOCKS

The PG-SSV distributor is a piston valve that supplies a fixed quantity of grease each time. By blocking an outlet, it can be supplied to the following outlet, so that the next outlet grease quantity can be doubled and the different demands can be achieved. A major feature of the PG-SSV distributor is each outlet is progressive, and the latter outlet must wait until the former outlet releases grease.

The working condition of the distributor can be checked by adding visualized monitors or electronic monitors. Each distributor has 6-24 (all even numbers) outlets and is able to deliver grease up to NLGI 2# or grease with a viscosity greater than 40cSt. The PG-SSV distributor is made of non-fragile and non-metallic sealing materials. Its superior sliding valve and high pressure-resistant end sealing structure (metal contact seal) make it able to withstand high temperature, high cold, and other harsh working conditions.

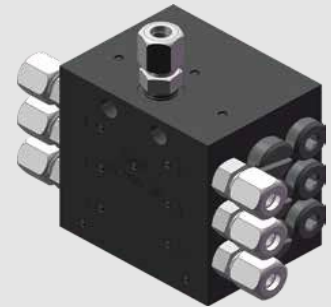


NUMBER OF OUTLETS	6-24 OUTLETS
MAXIMUM WORKING PRESSURE	350 BAR
MAXIMUM PRESSURE DIFFERENTIAL	100 BAR
DISPLACEMENT OF EACH OUTLET	0.2CC
INLET THREAD	G1/8" INNER THREAD
OUTLET THREAD	M10 X 1 (NEEDS TO BE EQUIPPED WITH AN OUTLET ON WAY VALVE)
MATERIAL	CARBON STEEL, GALVANISED NICKEL ALLOY
WORKING TEMPERATURE	-40° C - +80° C

PART NUMBER	DESCRIPTION
PG-401-100091-06	PG-SSV DISTRIBUTOR BLOCKS - 6 OUTLET BLOCK
PG-401-100091-08	PG-SSV DISTRIBUTOR BLOCKS - 8 OUTLET BLOCK
PG-401-100091-10	PG-SSV DISTRIBUTOR BLOCKS - 10 OUTLET BLOCK
PG-401-100091-12	PG-SSV DISTRIBUTOR BLOCKS - 12 OUTLET BLOCK
PG-401-100091-14	PG-SSV DISTRIBUTOR BLOCKS - 14 OUTLET BLOCK
PG-401-100091-16	PG-SSV DISTRIBUTOR BLOCKS - 16 OUTLET BLOCK
PG-401-100091-18	PG-SSV DISTRIBUTOR BLOCKS - 18 OUTLET BLOCK
PG-401-100091-20	PG-SSV DISTRIBUTOR BLOCKS - 20 OUTLET BLOCK
PG-401-100091-22	PG-SSV DISTRIBUTOR BLOCKS - 22 OUTLET BLOCK
PG-401-100091-24	PG-SSV DISTRIBUTOR BLOCKS - 24 OUTLET BLOCK

SUBSTITUTES LINCOLN SKF P203 PUMP





PG-SSVD DISTRIBUTOR BLOCKS

The displacement of each outlet on the PG- SSVD distributor is adjusted by using measuring bolts with different lengths. After installation, the metering bolts can be replaced quickly to adjust the displacement.

The PG- SSVD distributor inherits the basic functions of the PG-SSVD distributor. Its outlets can also be merged to provide more displacement options. The PG-SSVD distributor has no leakage and no pollution; it is also resistant to high temperatures and corrosive environments.



NUMBER OF OUTLETS	6-22 OUTLETS
MAXIMUM WORKING PRESSURE	350 BAR
MAXIMUM PRESSURE DIFFERENTIAL	100 BAR
DISPLACEMENT OF EACH OUTLET	0.08CC/0.14CC/0.2CC/0.3CC/0.4CC/0.6CC/0.8CC/1.0CC/1.4CC/1.8CC
INLET THREAD	G1/8" INNER THREAD
OUTLET THREAD	M10 X 1 (NEEDS TO BE EQUIPPED WITH AN OUTLET ON WAY VALVE)
MATERIAL	CARBON STEEL, GALVANISED NICKEL ALLOY
WORKING TEMPERATURE	-40° C - +80° C

PART NUMBER	DESCRIPTION
PG-401-111066 -06	PG-SSVD DISTRIBUTOR BLOCKS - 6 OUTLET BLOCK
PG-401-111066 -08	PG-SSVD DISTRIBUTOR BLOCKS - 8 OUTLET BLOCK
PG-401-111066 -10	PG-SSVD DISTRIBUTOR BLOCKS -10 OUTLET BLOCK
PG-401-111066 -12	PG-SSVD DISTRIBUTOR BLOCKS - 12 OUTLET BLOCK
PG-401-111066 -14	PG-SSVD DISTRIBUTOR BLOCKS - 14 OUTLET BLOCK
PG-401-111066 -16	PG-SSVD DISTRIBUTOR BLOCKS - 16 OUTLET BLOCK
PG-401-111066 -18	PG-SSVD DISTRIBUTOR BLOCKS - 18 OUTLET BLOCK
PG-401-111066 -20	PG-SSVD DISTRIBUTOR BLOCKS - 20 OUTLET BLOCK
PG-401-111066 -22	PG-SSVD DISTRIBUTOR BLOCKS - 22 OUTLET BLOCK

PART NUMBER	DESCRIPTION
PG-531-109527 -01	SSVD DISPLACEMENT SCREWS 0.08ML (MOQ 10)
PG-531-109527 -04	SSVD DISPLACEMENT SCREWS 0.3ML (MOQ 10)
PG-531-109527 -06	SSVD DISPLACEMENT SCREWS 0.6ML (MOQ 10)
PG-531-109527 -07	SSVD DISPLACEMENT SCREWS 0.8ML (MOQ 10)
PG-531-109527 -10	SSVD DISPLACEMENT SCREWS 1.8ML (MOQ 10)





HOSE & FITTINGS CENTRALISED LUBRICATION SYSTEMS

